



CONFIGURATION MANUAL

- Configuration Tool

sewoo 3" THERMAL POS PRINTER

MODEL : SLK-T SERIES

Rev.F 06 / 2020

Aroot Co., Ltd.

The manual and product are protected by copyright.

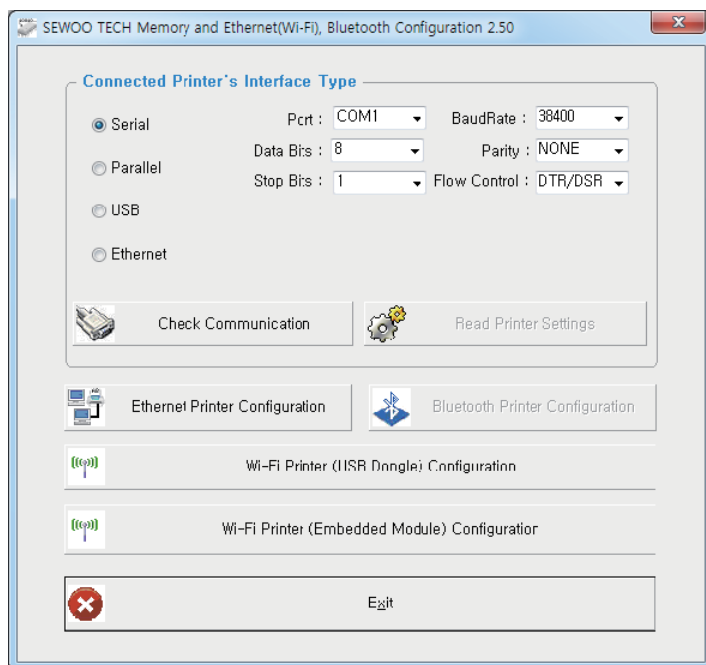


1. Instruction	3
2. Printer Option Setting	4
3. Code Page Setting	7
4. TCP/IP, Ethernet Setting	9
5. Wi-Fi Setting	11
6. Bluetooth Setting	14

You can change the configuration settings of your printer by using Utility.

To configure the printer with Utility.

1. Make sure that you have a PC running Windows or later.
2. Download utility from the Sewoo Tech website at www.miniprinter.com
3. Connect your printer to your PC using USB cable (Recommended).
4. Run the utility..



5. Select the connection in the **Connected Printer's Interface Type**.
6. Click the **Check Communication**.
7. Click the button for the settings you want to configure.

2. Printer Option Setting

4

To configure Printer's Options with Utility

1. Click **Read Printer Settings**.



Read Printer Settings

2. Update or check your settings.
3. Click **Save Modified Printer Settings** to finish.

Memory Save Dialog

Options Settings Serial Settings

Printer's Options Settings #1

Density	<input type="radio"/> Low	<input checked="" type="radio"/> Normal	<input type="radio"/> Dark
Paper Low Sensor	<input type="radio"/> Disable	<input checked="" type="radio"/> Enable	
Auto Cutter	<input checked="" type="radio"/> Partial Cut	<input type="radio"/> Full Cut	
Beep time after cut	<input checked="" type="radio"/> None	<input type="radio"/> 1-Second	<input type="radio"/> 2-Second
	<input type="radio"/> 2-Second	<input type="radio"/> 3-Second	
Printing width	<input checked="" type="radio"/> 3-inch	<input type="radio"/> 2-inch	

Printer's Options Settings #2

Error beep

Cut melody

Melody kind

Cutting when cover close

Font replace

Mac OS

Re-stick paper

Paper reduce

Line space reduce

Line feed reduce

Barcode height reduce

Save Modified Printer Settings Exit

●Error Beep

If the cover is open or there is no paper, the error beep function is activated.

This option allows you to enable / disable the error beep.

- BEEP ON / BEEP OFF

●Cut melody & Melody kind

To DK Port (Cash), Melody box or external buzzer can be connected.

You can activate it from the Melody Setting menu, and the melody will operate after the cutting operation.

- Melody Box : Melody is fixed and volume can be adjusted.

- External Buzzer : 3 types of melody are output according to the Melody Type setting and volume control is not included.

●Cutting when cover close

If the cover is opened and then closed, decide if you want to cut the paper after the dummy feed.

- Disabled / Enabled

●Font replace

FONT SETTING menu can be change the Font mapping(FONT A / FONT B).

If you did not want other side font, you can disable that.

- FONT A : 12x24

- FONT B : 9x17

FONT SETTING

1. FONT A -> A / FONT B -> B

2. FONT A -> B / FONT B -> B

3. FONT A -> A / FONT B -> A

4. FONT A -> B / FONT B -> A

●Mac os

It is a function for interlocking with MAC OS. When activated, it is registered as Generic POS Printer in Device Manager.

- Disabled / Enabled

●Re-stick paper

It is a function for use the label paper.

When using this function, the printer performs dummy feeding every minute.

(This feature is only supported on certain models)

- Disabled / Enabled

●Paper Reduce

Reduce menu (Line space, Line feed, barcode[1D] height) was developed for paper saving.

- Line space : Line space means the amount of feed when you intentionally generate newlines.

- Line feed : Line feed means the amount of feed when there is an automatic line break.

- Barcode Height : Barcode Height means the height of the barcode when creating a one-dimensional barcode.

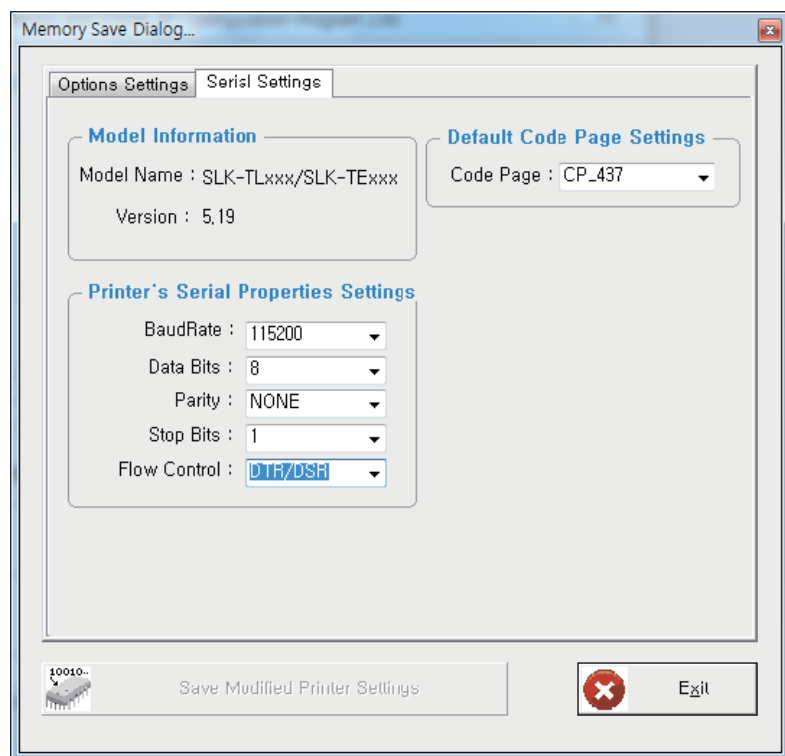
EACH OPTION

1. NORMAL

2. REDUCE 50%

3. REDUCE 75%

4. REDUCE 90%

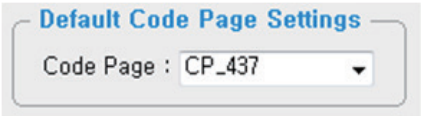


Use the following table to Printer's Options setting

Name	Description
Density	Set the printing darkness of the printer from Low to Dark.
Paper Low Sensor	Set the mode of the Paper Low Sensor to Disable or Enable.
Auto Cutter	Set the mode of the Auto Cutter to Partial Cut or Full Cut
Beep time after cut	Set the beep time after cut to none, 1, 2 or 3 Seconds.
Printing width	Set the type of Printing width to 3 Inch or 2 Inch.
Code Page	Set the code type of printer to use.
BaudRate	Set the Baudrate of the Printer's serial port to print.
Data Bits	Set the Data Bits of the Printer's serial port to print.
Parity	Set the Parity of the Printer's serial port to print.
Stop Bits	Set the Stop Bits of the Printer's serial port to print.
Flow Control	Set the Flow Control of the Printer's serial port to print.

To configure Code Page settings with Utility.

- 1. Click Serial Settings tab.
- 2. Update or check the Code Page.



- 3. Click **Save Modified Printer Settings** to finish.

Use the following table to Code Page Settings.

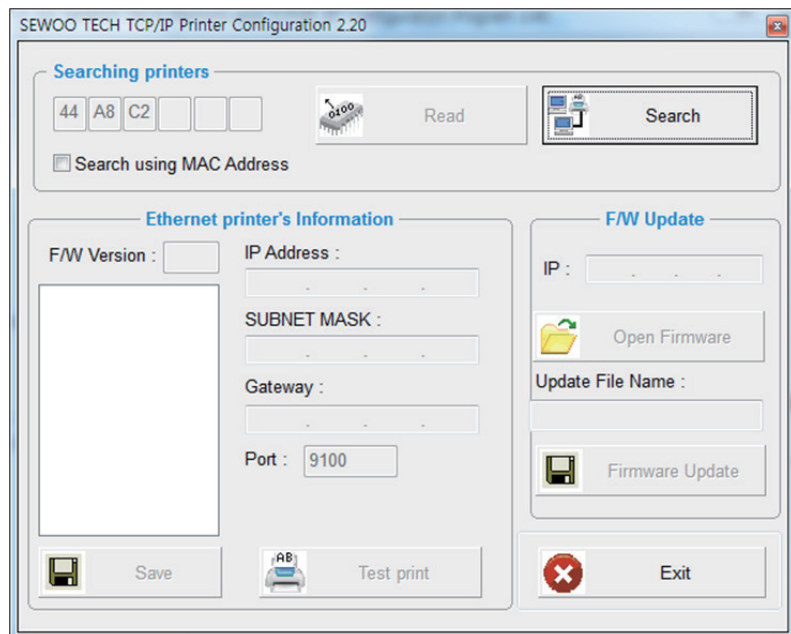
Code Page	Description
CP_437	MS-DOS United States, Australia, New Zealand, South Africa
CP_737	MS-DOS Greek
CP_775	Baltic
CP_850	MS-DOS Latin-1
CP_852	MS-DOS Latin-2
CP_857	MS-DOS Turkish / Latin-5
CP_858	MS-DOS Multilingual / Latin-1 with euro symbol
CP_860	MS-DOS Portuguese
CP_862	MS-DOS Hebrew
CP_863	MS-DOS Canadian French
CP_864	MS-DOS Arabic
CP_865	MS-DOS Nordic / Danish / Norwegian
CP_866	MS-DOS Russian / Cyrillic
CP_874	Thai
CP_1250	Windows Central Europe
CP_1251	Windows Cyrillic
CP_1252	Windows West European Latin 1
CP_1253	Windows Greek
CP_1254	Windows Turkish
CP_1256	Windows Arabic
CP_1257	Windows Baltic
CP_1258	Windows Vietnamese

CP_KATAKANA	Katakana
ISO_8859_1	Latin Alphabet No. 1
ISO_8859_2	Latin Alphabet No. 2
ISO_8859_7	Greek
ISO_8859_9	Latin Alphabet No. 5(Turkish)
MAZOVIA	Polish
TIS11	THAI
TIS13	THAI
TIS14	THAI
TIS16	THAI
TIS17	THAI
TIS18	THAI
TIS42	THAI

For more information, Please contact your supplier.

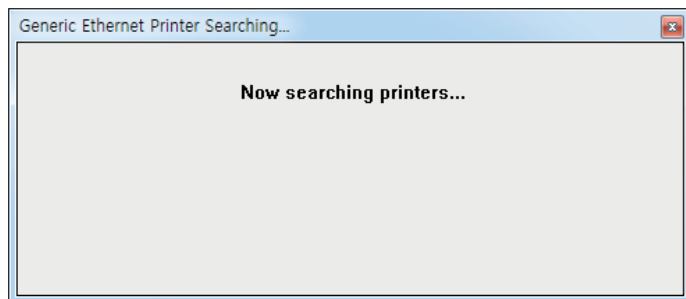
To configure TCP/IP setting with Utility.

1. Click TCP/IP Printer Configuration.



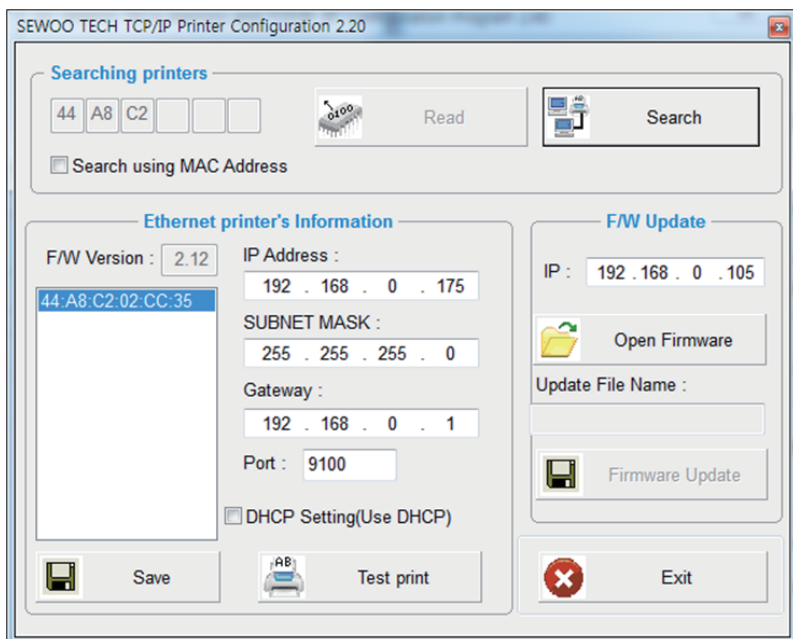
2. Click **Search** to find the printer.

(To Search using MAC Address, you need to **check the Search using MAC Address**)



3. Update or check your settings.

(To use DHCP Setting, you need to check the **DHCP Setting**)

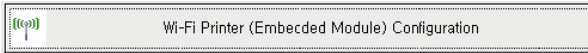


4. Click **Test print** to test the printer is set correctly.

5. Click **Save** to finish.

To configure Wireless LAN settings with Utility.

1. Click **Wi-Fi Printer Configuration**.



2. Click Open Port
3. Click **Get Wi-Fi Information**
4. Update or check your settings.
5. Click **Save Wi-Fi Information** to finish.

SEWOO TECH Wi-Fi(Embedded Module) Printer Configuration L02

Port and Wi-Fi Information

Port Information

Port : USB BaudRate : 19200
Data Bits : 8 Parity : NONE
Stop Bits : 1 Flow Control : DTR/DSR

Open Port
Close Port

Wi-Fi Information

MAC address : 84:72:07:38:00:17
SSID : R&D_dlink24G
IP : 192.168.100.1
NetMask : 255.255.255.0
Gateway : 192.168.100.1
DNS : 192.168.100.1

Get Wi-Fi Information
Save Wi-Fi Information
Exit
Reset (Factory Settings)
WPS

☒ DHCP Settings

TCP PORT : 9100

Wi-Fi Band : 2.4GHz
Wi-Fi Mode : infrastructure
Wi-Fi Channel : 6
Wi-Fi Encryption : WPA
Wi-Fi Authentication : None
Using KEY ID : KEY ID 1

WEP Key
WEP Key is a write-only.

KEY ID 1 : HEX
KEY ID 2 : HEX
KEY ID 3 : HEX
KEY ID 4 : HEX

Progress :

WPA Authentication

WPA Authentication : AUTO WPA Encryption : AUTO
WPA Key : 12345678
WPA Key is a write-only. The input range is 8 to 63 ASCII or 64 hex characters

Enterprise Settings

Use the following table to Wireless LAN setting.

Name	Description
SSID	The Network name to connect.
Wi-Fi Mode	Set the mode of the device to SoftAP/ infrastructure.
Wi-Fi Channel	Set the channel to use. 2.4GHz : 1 ~ 13 5GHz : 36 ~ 64, 100 ~ 165
Wi-Fi Encryption	Set the type of Encryption to none, WEP-64, WEP-128 or WPA/WPA2, Enterprise(EAP-TLS, EAP-TTLS, PEAP-MSCHAPv2)
Wi-Fi Authentication	Set the type of Authentication to open system, shared key or both
Using KEY ID	Set the number of KEY to use from No. 1 to No. 4.
KEY ID 1 ~4	Enter value for up to 4 KEYS to ASCII or HEX
DHCP Settings	IP address and DNS options are obtained using DHCP.
TCP Port	Set the port to use
WPA Authentication	Set the type of Authentication to WPA-PSK, WPA2-PSK, Auto / TKIP, AES, Auto

6. To Set Wi-Fi printer correctly, you need to check the AP's or Router's setting in advance.

Ex) D-Link Router (Model: DIR-820L)

MAC address : 84:72:07:38:00:17

SSID : R&D_dlink24G

IP : 192, 168, 100, 1

NetMask : 255, 255, 255, 0

Gateway : 192, 168, 100, 1

DNS : 192, 168, 100, 1

Wi-Fi Band : 2.4GHz

Wi-Fi Mode : infrastructure

Wi-Fi Channel : 6

Wi-Fi Encryption : WPA

Wi-Fi Authentication : None

Using KEY ID : KEY ID 1

WIRELESS

Use this section to configure the wireless settings for your D-Link Router. Please note that changes made on this section may also need to be duplicated on your Wireless Client.

Save Settings Don't Save Settings

WIRELESS NETWORK SETTINGS

Wireless Band : 2.4GHz Band

Enable Wireless: ☒ Always ☐ Add New

Wireless Network Name: R&D_dlink24G (Also called the SSID)

802.11 Mode: Mixed 802.11n, 802.11g and 802.11b

Enable Auto Channel Scan: ☒

Wireless Channel: 2.437 GHz - CH 6

Transmission Rate: Best (automatic)

Channel Width: Auto 20/40 MHz

Visibility Status: ☒ Visible ☐ Invisible

WIRELESS SECURITY MODE

To protect your privacy you can configure wireless security features. This device supports three wireless security modes, including WEP, WPA-Personal, and WPA-Enterprise. WEP is the original wireless encryption standard. WPA provides a higher level of security. WPA-Personal does not require an authentication server. The WPA-Enterprise option requires an external RADIUS server.

Security Mode: WPA-Personal

WPA

Use **WPA** or **WPA2** mode to achieve a balance of strong security and best compatibility. This mode uses WPA for legacy clients while maintaining higher security with stations that are WPA2 capable. Also the strongest cipher that the client supports will be used. For best security, use **WPA2 Only** mode. This mode uses AES(CCMP) cipher and legacy stations are not allowed access with WPA security. For maximum compatibility, use **WPA Only**. This mode uses TKIP cipher. Some gaming and legacy devices work only in this mode.

To achieve better wireless performance use **WPA2 Only** security mode (or in other words AES cipher).

WPA Mode: Auto (WPA or WPA2)

Cipher Type: TKIP and AES

Group Key Update Interval: 3600 (seconds)

PRE-SHARED KEY

Enter an 8- to 63-character alphanumeric pass-phrase. For good security it should be of ample length and should not be a commonly known phrase.

Pre-Shared Key:

WPA Authentication

WPA Authentication: ☒ WPA Encryption: ☒

WPA Key : 12345678

WPA Key is a 32-bit key. The key can range from 8 to 63 ASCII or 64 hex characters

Wi-Fi Information

MAC address : 84:72:07:38:5E:84

SSID : SW_5E84

IP : 192 . 168 . 100 . 10

NetMask : 255 . 255 . 255 . 0

Gateway : 192 . 168 . 100 . 1

DNS : 192 . 168 . 100 . 1

Get Wi-Fi Information

TCP PORT : 9100

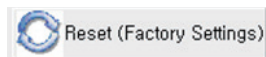
☐ DHCP Settings

Save Wi-Fi Information

Exit

Reset (Factory Settings)

WPS



- **Reset(Factory Settings)** : Wi-Fi setting will be factory reset.

Initialization information

Wi-Fi Mode : Soft-AP

Chnannel : 1

Encryption : None

SSID : SW_XXXX / MOBILE_PRINTERXXXXXX(POS Printer / Mobile Printer)

IP Address : 192.168.100.1

Subnet Mask : 255.255.255.0

Gateway : 192.168.100.1



- **WPS** : Ability to automatically connect to AP even if user does not enter setting information.

(AP must support WPS function.)

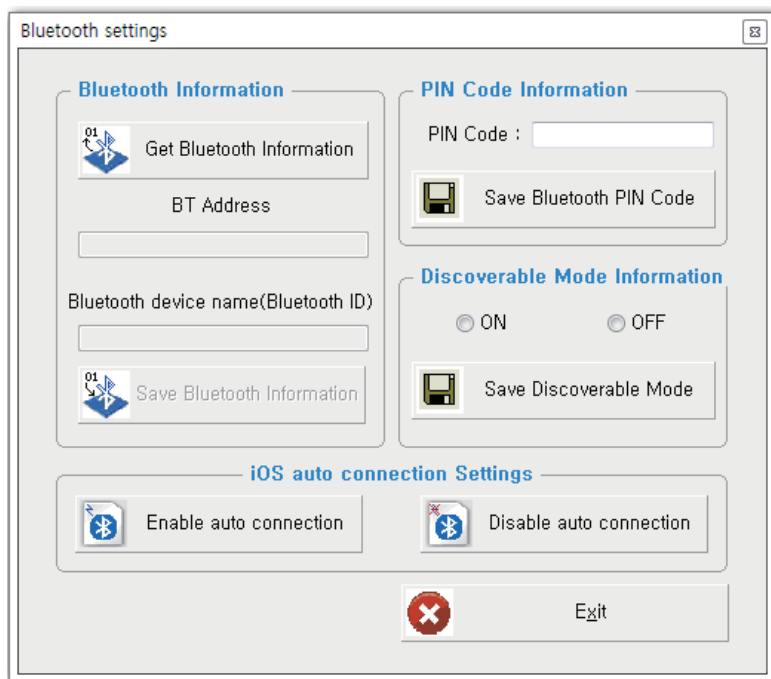
How to use - Press the WPS button in the Wi-Fi setting utility and press the AP WPS button to connect.

To configure Bluetooth setting with Utility.

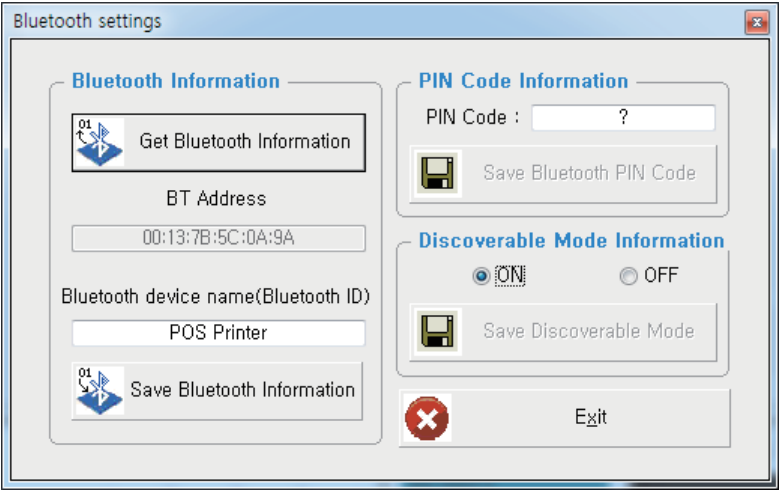
1. Click **Communication After Bluetooth Printer Configuration**



2. Click **Get Bluetooth Information**



3. Update or check your settings



4. Click **Save Bluetooth Information** to finish.

Use the following table to Bluetooth setting

Name	Description
BT Address	The MAC address for Bluetooth Module.
Bluetooth device name (Bluetooth ID)	The Name of Bluetooth Printer to pair.
PIN Code	Pin code to pair (Default : 0000 or 1234)
Discoverable Mode	Set whether the printer will appear or not in a Bluetooth inquiry on another device, typically, a master device.

Aroot Co., Ltd.

sewoo